

# TISGraph

The background image shows a red steel truss bridge over a river. Overlaid on the left side of the image are three data visualization elements: a red line graph at the top, a blue area chart in the middle, and a yellow area chart at the bottom. A light gray dashed grid is visible over the entire image.

---

## Document-Centric Modular Reporting Tool for Time-Series Data

---

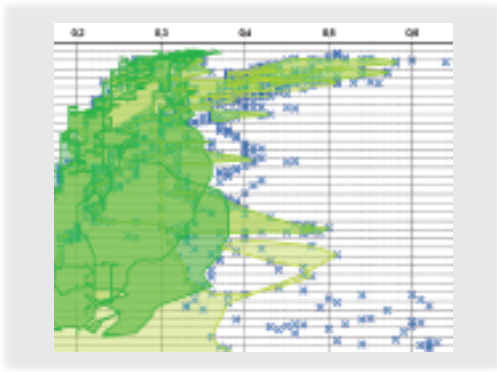
TISGraph allows to visualize time-series data from diverse sources. TISGraph features an extensive toolset for quick and precise layouting of large amounts of data. Whether you want to informally visualize your data or need to compile reports for the authorities, TISGraph lets you simply do it.

---

## TISGraph's Key Features

---

- Display data from KISTERS WISKI and a wide variety of other sources
- Create data-centric reports with no design constraints
- Layout printer-ready documents with precise positioning of graphical elements
- Export reports to PDF for easy sharing and archiving
- Full-featured vector graphics
- Browse through time ranges interactively and easily
- Custom data source adapters and individual charts available on request
- Display continuously updated live data



## Creating Charts

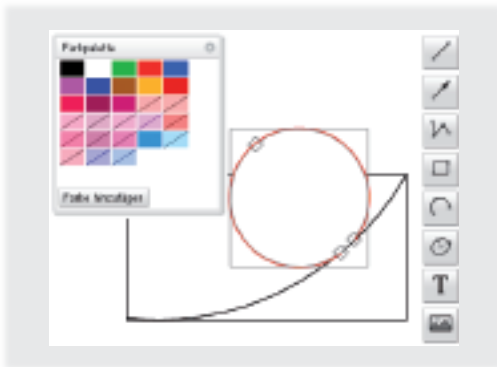
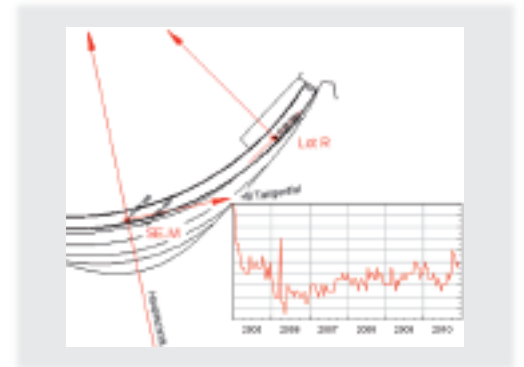
TISGraph makes it easy to present graphical data from various sources. TISGraph provides tools to display datasets using time- or parameter-driven charts.

You can tune the chart's appearance to match your needs with a variety of presentation models. The labellings of the axes dynamically adapt their divisions to the displayed scales for maximum readability.

## Importing Images

Image files in most common formats can easily be included in TISGraph documents. Most notably, TISGraph supports importing PDF documents.

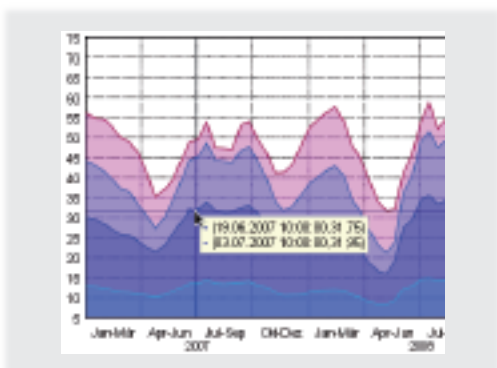
For example, construction plans or maps can be combined with data from your actual instruments.



## Creating Document Layouts

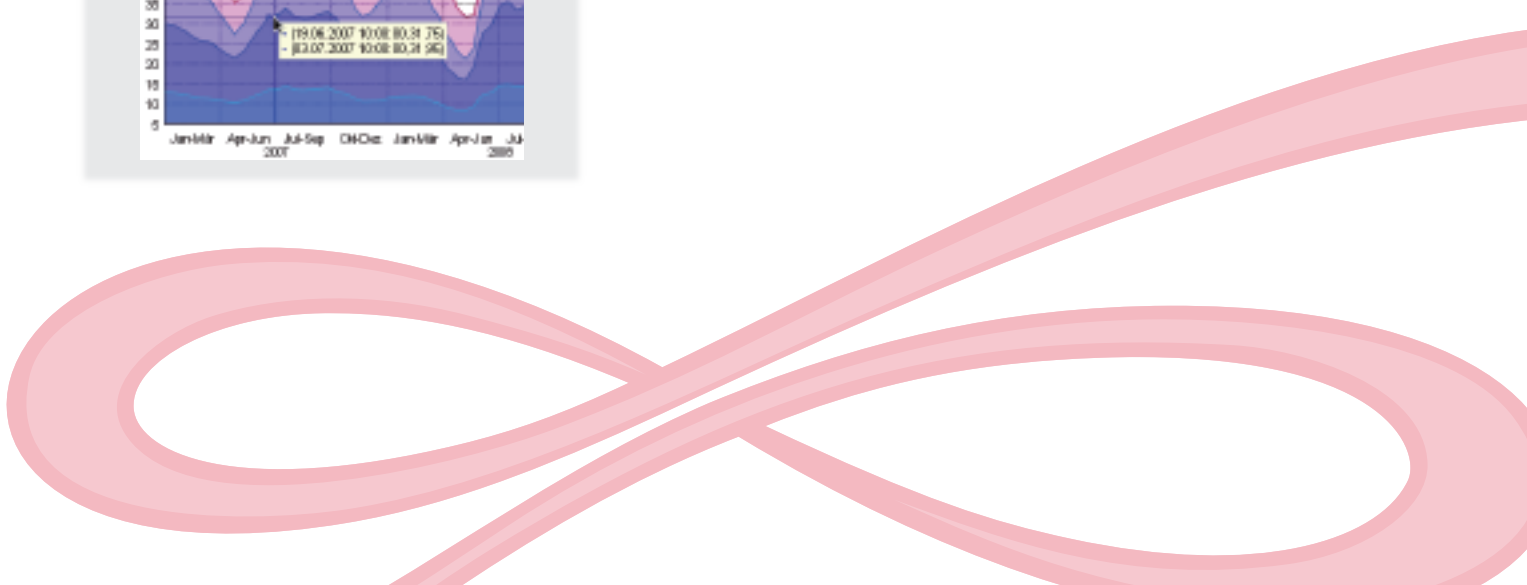
TISGraph features a full-fledged vector graphics toolkit. This lets you create page layouts with charts and other graphical elements just the way you want to.

All shapes can be positioned precisely, providing full control over the final printout. By defining global elements for all pages of a document you can insert branding in multi-page reports in a snap.



## Data Analysis

TISGraph provides an extensive toolset for direct data analysis. You can quickly check a dataset for exact values and plausibility by just moving the mouse over the relevant portion of the chart.



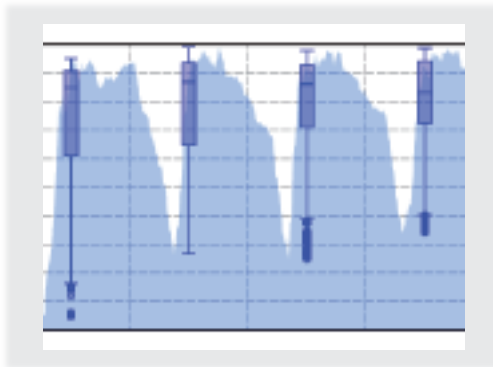
## Data Tables

When exact numeric values of measurements matter, you can create tables with TISGraph. As with graphs, data in tables can be drawn from various sources. Tables can "roll out" the data in any direction, both horizontally and vertically.

There are virtually no constraints on the cell layout and size of the repeated elements. The formatting features are as extensive as in well-known office suites.



Datum	Maximum	Minimum
1999-02-15 10	86.8	86.7
1999-05-01 00	48.000	48.000
1999-04-01 01	41.000	38.000
1999-05-18 11	21.0	20.0
1999-06-22 11	42.7	38.000
1999-07-22 11	86.7	38.000
1999-08-21 11	83.8	41.7
1999-09-28 11	84.7	45.3
1999-10-05 11	88.28	46.28
1999-11-08 10	47.28	—



## Custom Add-Ons

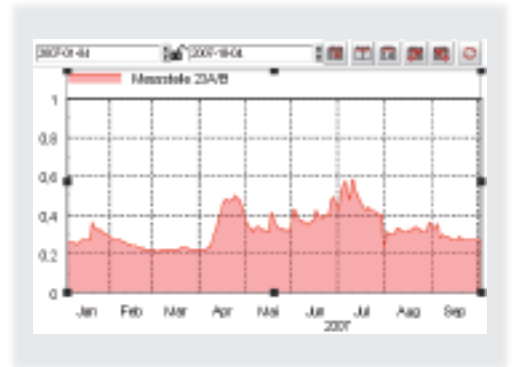
The modular approach makes TISGraph ready for custom extensions of its presentation capabilities. For example, isopiestic line charts and envelope curves are available as extension modules.

By default, TISGraph relies on KISTERS WISKI or TSM-Server as a data source. However data sources are extensible too, and can be acquired as extension modules. Data from all installed source adapters may be used in a single document, making it easy to compare data from different sources.

## Browsing through Time

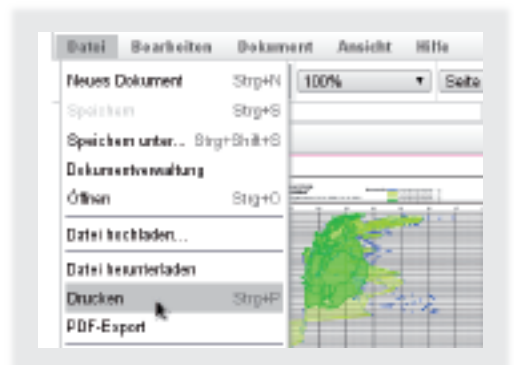
In TISGraph you can change the displayed time range on the fly, with direct feedback. Time ranges for individual charts can not only be defined absolutely but also as relative offsets. (i.e. "previous year")

TISGraph supports multiple time ranges in a single document. For following live data, TISGraph provides a refresh-button for updating charts immediately.



## Archiving and Sharing

TISGraph documents can be printed directly or exported to PDF files. Such PDF documents are created ISO standards compliant and can be digitally signed with off-the-shelf software tools.





## Technology

TISGraph utilizes state-of-the-art web technologies to deliver a stunning user experience directly to the browser. It is not necessary to install any software on the clients, TISGraph supports any OS with an up-to-date, standards-compliant browser.

The TISGraph server is Java based and therefore equally deployable on Windows and Linux servers.

## Modular Extensibility

Using OSGi technology as basis, the TISGraph software is modular and very flexible. Specific chart types or data sources can easily be added for custom applications.

If you need to incorporate a specific data source or to tailor a chart to special needs, just contact us!



---

## About ITEG

---

ITEG provides specialized software to infrastructure maintainers and mechanical engineering companies.

Previous projects included developing software for the electronic truck tolling system in Germany, stressevaluation for Siemens AG and deformation prognosis models for large dams.

## Cooperation

TISGraph is developed by ITEG in close cooperation with KISTERS and our common customers.

The current featureset is based on the experience of Illwerke AG from Vorarlberg, Austria and the Federal Office for the Environment in Bern, Switzerland.



---

## ITEG IT-Engineers GmbH

---

6020 Innsbruck, Austria  
Conradstraße 5  
Phone: +43 512 20 90 42  
office@iteg.at  
www.iteg.at  
www.tisgraph.com

